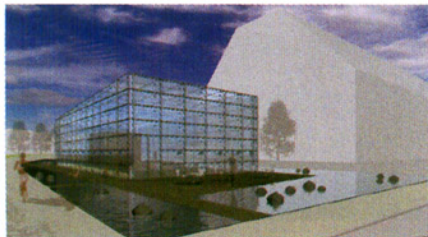


Pavilion planned for Boston's Rose Kennedy Greenway

New York-based firm Stephen Yablon Architect has won a competition to design a 2,500-square-foot visitor center on Boston's Rose Kennedy Greenway. The \$3 million building will serve as a gateway to the Boston Harbor Islands National Park, and is



A reflecting pool surrounds the pavilion.

expected to be one of the first structures to be completed on the greenway, whose land was made available by the dismantling of Boston's Central Artery highway. The pavilion is slated to open in 2007.

Yablon's design is a sheer glass box set on a stone base surrounded by a shallow reflecting pool. It will contain the park's visitor center, a café, and bookstore. Display screens, visible from the interior and exterior, will be embedded in the structure's walls. The greenway comprises a 30-acre crescent that runs from North Station to Chinatown. Its parks are not expected to be completed before 2007. *Ted Smalley Bowen*